

**ELECTRONIC TIMERS**  
FOR RESISTANCE WELDING

# SERRATRON-300

**300dp** ProfiBus · **300net** DeviceNet · **300ib** InterBus

- **FIELD BUS FOR USE AS I/O**
- **ETHERNET WITH TCP/IP**
- **3 SIMULTANEOUS WELDS**
- **PLC FUNCTIONS**



New Electronic Standards For New Welding Procedures.



## NEW ELECTRONIC STANDARDS FOR NEW WELDING PROCEDURES

### FIELD BUSES FOR I/O

Profibus DP, DeviceNet or Interbus for use as Input / Output interfaces.

### ETHERNET

Ethernet 10 base T interface with TCP/IP networking for centralized programming.

### 3 SIMULTANEOUS WELDS

Simultaneous operation of up to 3 independent welding groups.

### PLC FUNCTIONS

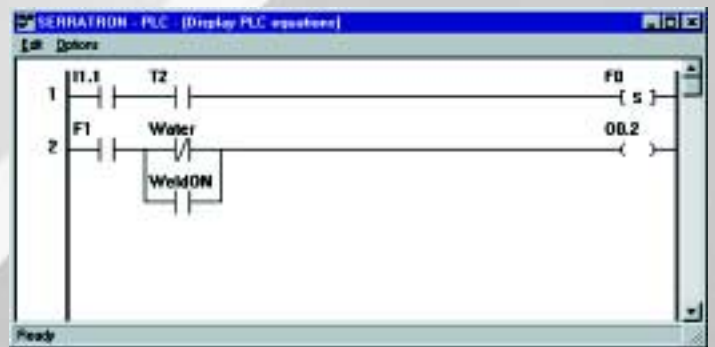
The easy-to-use integrated PLC functions allow a total control of the welding machine, with no need of external PLCs.

### ADVANCED PROGRAMMING FUNCTIONS:

- Different working modes: for robots, multiwelders, DC welding machines and Medium Frequency Inverters.
- Program selection by Spot Number.
- Tip dressing management and electrode wear compensation.
- 1/2 wave welding function.

### WIDE RANGE OF SERRA ELECTRONIC PRODUCTS.

The great family of SERRA electronic products meets any industrial demand for welding and automation: electric cabinets, power units, standard software and hardware and dedicated products according to specific needs and applications.



# TECHNICAL DATA

| <b>SERRATRON-300</b>   | <b>300dp</b>      | <b>300ib</b> | <b>300net</b> |
|--|-------------------|--------------|---------------|
| <b>BÁSICS FUNCTIONS</b>  |                   |              |               |
| PROFIBUS DP field bus for I/O  | ●                 | –            | –             |
| DEVICENET field bus for I/O  | –                 | ●            | –             |
| INTERBUS field bus for I/O   | –                 | –            | ●             |
| PLC functions  | ●                 | ●            | ●             |
| Spot, projection and seam welding  | ●                 | ●            | ●             |
| Welding units simultaneously controlled                                  | 3                 | 3            | 3             |
| Inputs 24V   | 36                | 36           | 36            |
| Outputs 24V 0,7 A  | 32                | 32           | 32            |
| Maximum number of weld programs  | 192               | 192          | 192           |
| Weld current programmable in kA  | ●                 | ●            | ●             |
| Electrode wear compensation by predefined curves                         | ●                 | ●            | ●             |
| Squeeze force between electrodes programmable in kN                      | ●                 | ●            | ●             |
| Operation in Phase shifting, Current Monitoring or Constant Current mode | ●                 | ●            | ●             |
| Proportional control of weld force                                       | ●                 | ●            | ●             |
| Welding sequences: single spot, repeated spot and seam welding           | ●                 | ●            | ●             |
| Tip-dressing management  | ●                 | ●            | ●             |
| 1/2 wave welding function  | ●                 | ●            | ●             |
| Log of the latest welds (nr)   | 32                | 32           | 32            |
| Log of the latest fault events (nr)                                      | 128               | 128          | 128           |
| Real time clock and date   | ●                 | ●            | ●             |
| <b>WORKING MODES</b>   |                   |              |               |
| <b>MUX Mode (multiwelders, robots and portable welders)</b>              |                   |              |               |
| Weld programs  | 3 x 64            | 3 x 64       | 3 x 64        |
| I/O interface by field bus or discrete 24 Vdc                            | ●                 | ●            | ●             |
| <b>PLC Mode (automated welding machines)</b>                             |                   |              |               |
| Weld programs  | 3 x 64            | 3 x 64       | 3 x 64        |
| I/O extension by means of MES 16x16 module                               | 148/144           | 148/144      | 148/144       |
| <b>MFI Mode (Medium Frequency Inverters)</b>                             |                   |              |               |
| Weld programs  | 64                | 64           | 64            |
| Number of inverters  | 1                 | 1            | 1             |
| I/O interface by field bus or discrete 24 Vdc                            | ●                 | ●            | ●             |
| <b>DCW Mode (DC welding machines)</b>                                    |                   |              |               |
| Weld programs  | 64                | 64           | 64            |
| I/O extension by means of MES 16x16 module                               | 148/144           | 148/144      | 148/144       |
| <b>PROGRAMMING MODES</b>   |                   |              |               |
| Programming software   | CPC-300dp         | CPC-300net   | CPC-300ib     |
| Centralized programming via Ethernet with TCP/IP networking interface    | ●                 | ●            | ●             |
| Lap top via port V24/RS-232  | ●                 | ●            | ●             |
| Programming terminal TP-10 via RS-232                                    | ●                 | ●            | ●             |
| <b>ELECTRICAL AND MECHANICAL CHARACTERISTICS</b>                         |                   |              |               |
| Power supply frequency (automatic switching)                             | 50/60Hz           |              |               |
| Power supply synchronisation   | 24 Vcc ±25%       |              |               |
| Inputs 24 Vdc (individual LED)   | 36                |              |               |
| Outputs 24 Vdc/0,7A (individual LED) short circuit protected             | 32                |              |               |
| Operating temperature  | 0 to 60° Celsius  |              |               |
| Dimensions H x W x L   | 342 x 235 x 35 mm |              |               |
| Weight   | 2,4 Kg            |              |               |

# OPTIONS

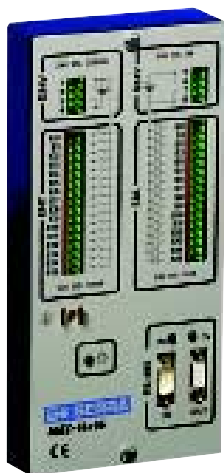
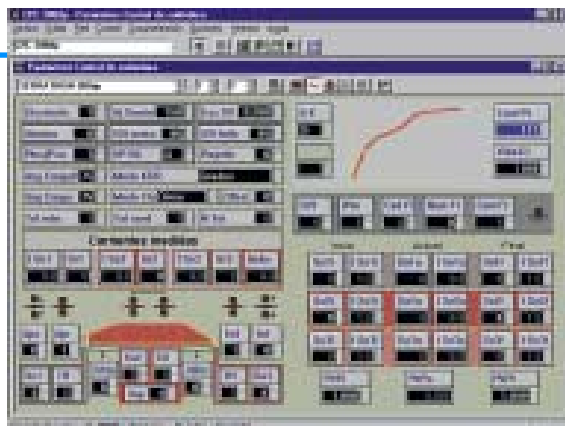


## PROGRAMMING TERMINAL TP-10

Can be used for programming, displaying weld parameters, counters, measured currents, error messages, etc. The ergonomic design assures easy handling.

## SOFTWARE CPC-300

Offers a quick and complete programming and monitoring interface under Windows®. Can be used in a lap top via port V24 or in a PC connected to an Ethernet network.



## MES 16x16 EXTENSION MODULE

External module that expands the number of Inputs / Outputs to be controlled by the Serratron in the PLC mode.

## PRODUCT REFERENCES TO BE USED FOR ORDERING

Please use the references listed below when ordering. It help us to process your order correctly and quickly.

| PRODUCT          | REFERENCE           | DESCRIPTION  |
|------------------|---------------------|--|
| SERRATRON 300dp  | CSP-300DP           | Timer with field bus Profibus DP                     |
| SERRATRON 300net | CSP-300NET          | Timer with field bus Devicenet                       |
| SERRATRON 300ib  | CSP-300IB           | Timer with field bus Interbus                        |
| CPC-300dp/V24    | SOFT CPC-300dp/V24  | Serratron 300dp programming software for lap top     |
| CPC-300dp/RED    | SOFT CPC-300dp/RED  | Serratron 300dp programming software for networking  |
| CPC-300net/V24   | SOFT CPC-300net/V24 | Serratron 300net programming software for lap top    |
| CPC-300net/RED   | SOFT CPC-300net/RED | Serratron 300net programming software for networking |
| CPC-300ib/V24    | SOFT CPC-300ib/V24  | Serratron 300ib programming software for lap top     |
| CPC-300ib/RED    | SOFT CPC-300ib/RED  | Serratron 300ib programming software for networking  |
| MES 16x16        | MES-16X16           | External I/O extension module                        |
| TP-10            | TP-10               | Programming terminal                                 |



### SERRA SOLDADURA, S.A.

Polígono Industrial Zona Franca  
Sector C, Calle D, nº 29  
E-08040 BARCELONA  
Tel. (34) 93 26 17 100  
Fax (34) 93 26 17 110  
<http://www.serrasold.com>

CERTIFIED  
ISO 9001



Agent: