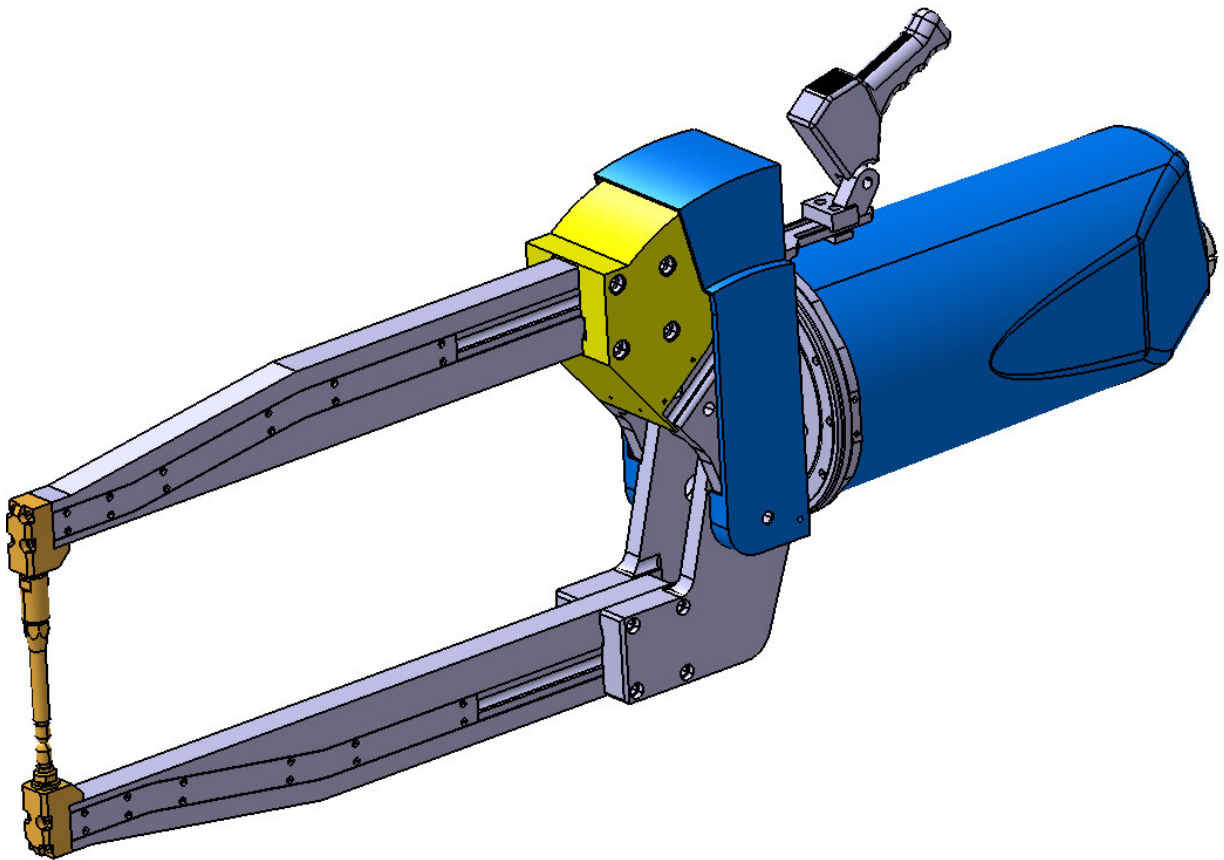


MANUAL WELDGUN

XXP TYPE

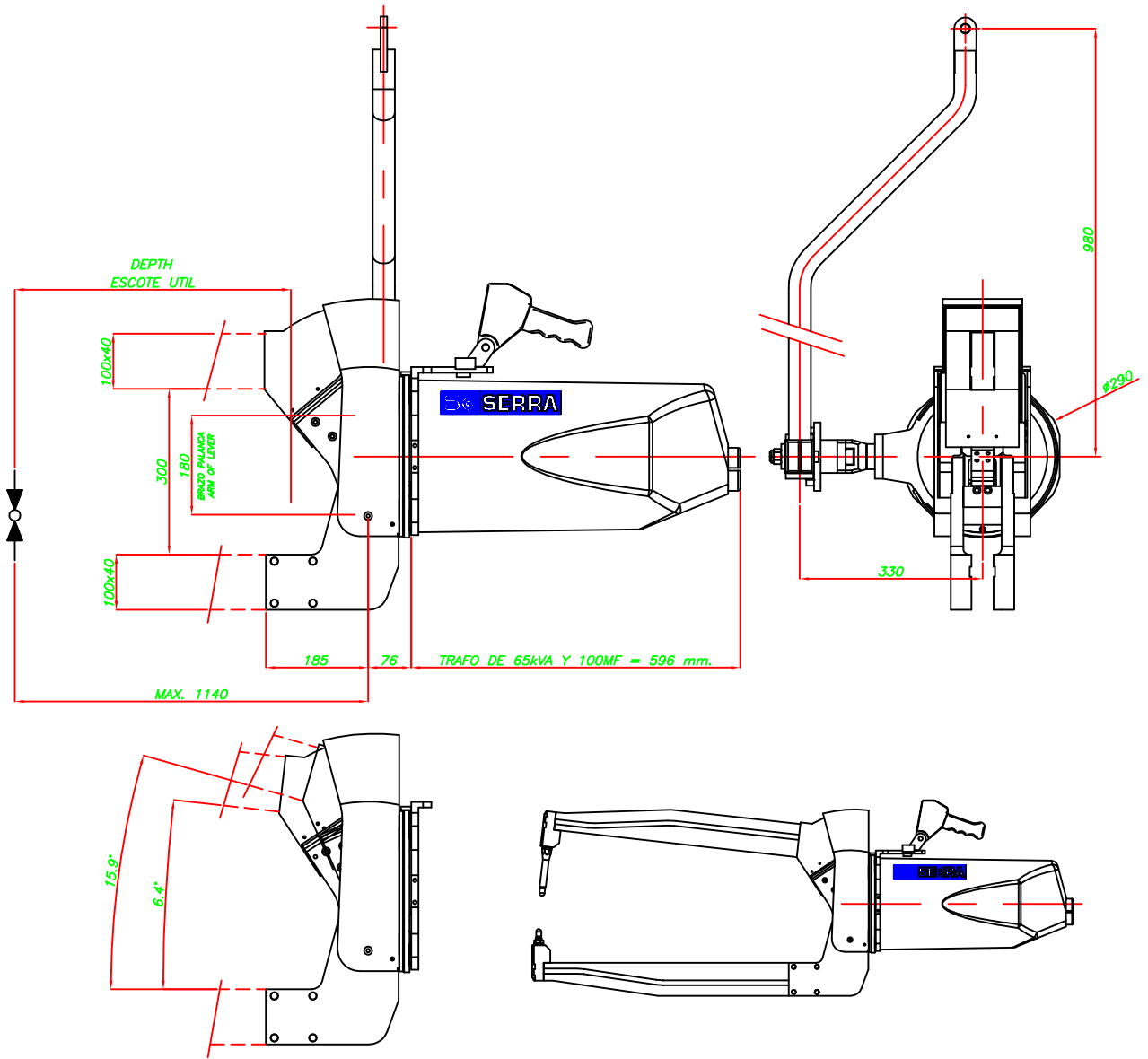


S6 SERRA

**QUALITY
MANAGEMENT**
Certificate

Welding equipment assembly
mechanical assembly ISO 9001





OPEN ARMS
STROKE 25+30 mm.

TECHNICAL DATA		
TRAFO	KVA/V.	65/8.5
	KVA/V.	100/10 MF

PNEUMATIC CILINDER		
WELDING CILINDER	mm.	Ø 100 (x4)
STROKE	mm.	25+30
AIR PRESSURE	bar	MAXI.8
MAX. FORCE	daN.	2250

COOLING WATER FLOW	l/mn.	10
DISTANCE BETWEEN ARMS	mm.	300

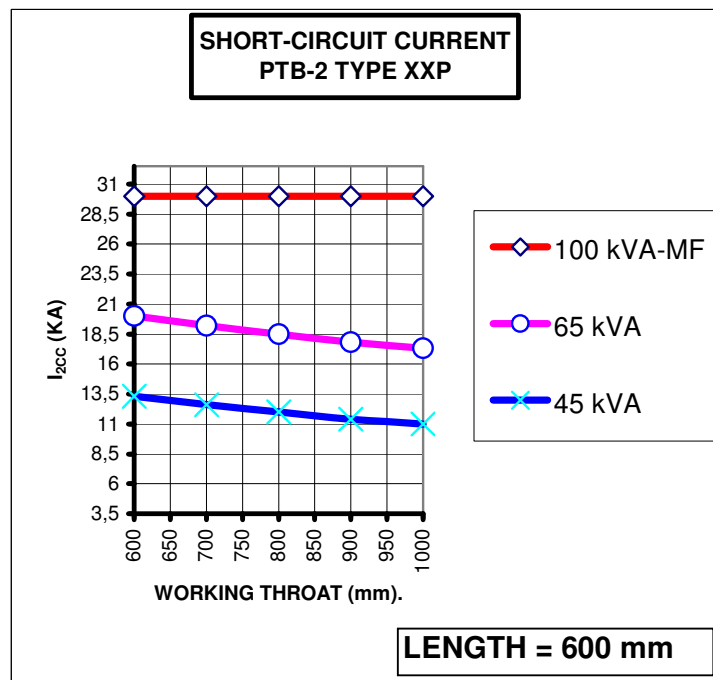
MAX. FORCE AT ELECTRODES	
ARM LENGTH	PNEUMATIC CYLINDER AT 8 bar
400 mm.	750 daN.
500 mm.	632 daN.
600 mm.	547 daN.
700 mm.	482 daN.
800 mm.	430 daN.
900 mm.	389 daN.
1000 mm.	355 daN.

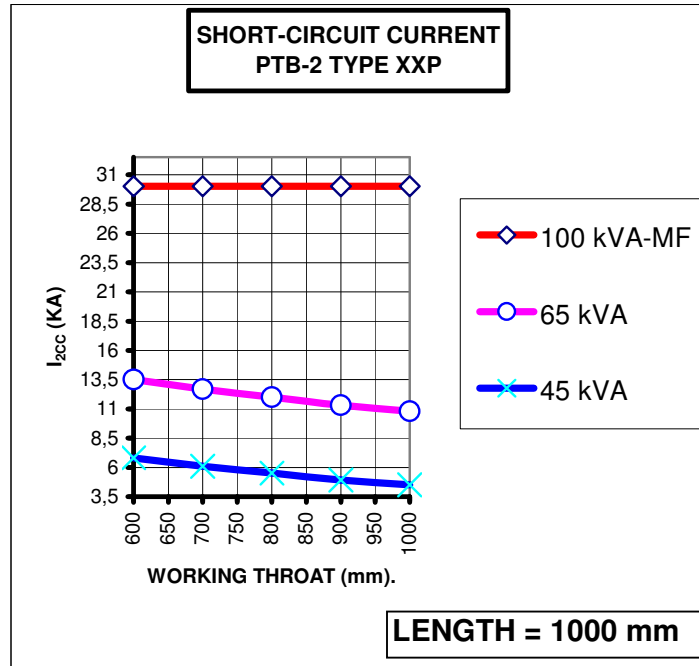
WEIGHT OF THE GUN BODY WITHOUT ARMS		
TRAFO	65 Kva	100 MF
	99	91
WEIGHT		

	MODEL	Units	PTB2-XXP
General data	Arm dimensions	mm x mm	100 x 40
	Gun body maximum resistance	daN	900
	Distance between arms mín. / máx. "Z"	mm	400
	Maximum arm length	mm	1140
	Gun weight (min-max) without arms	Kg.	91 – 99

Pneumatic version	Cylinder diameter	mm	4x100
	Cylinder pre-stroke	mm	30
	Gun rotation angle in pre-stroke	Grados	9,6
	Cylinder stroke	mm	25
	Total gun stroke rotation angle	Grados	16
	Maximum air pressure	bar	8
	Cylinder force at 8	daN	2250

Cooling	Maximum water inlet temperature	°C	30
	Minimum water inlet temperature	°C	10
	Minimum water differential pressure	bar	1.5
	Cooling flow	L/min	9





Manualweldgun Type XXP Force at electrodes with cylinder Ø4x100

Length mm	Pressure (bar)						
	2	3	4	5	6	7	8
400	189	283	378	472	567	661	756
500	159	239	319	399	478	558	638
600	138	207	276	345	414	483	551
700	121	182	243	304	364	425	486
800	109	163	217	271	326	380	434
900	98	147	196	245	294	343	392
1000	89	134	179	224	268	313	358
1100	82	123	165	206	247	288	329